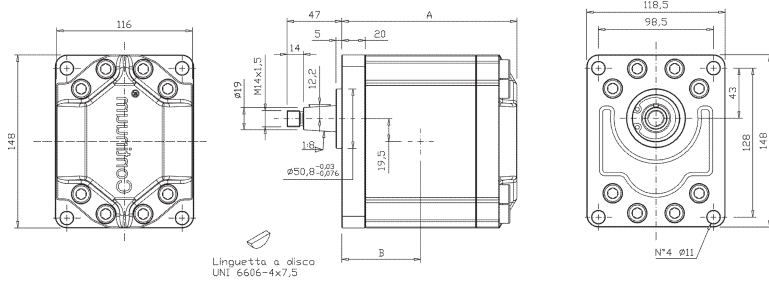


## Dimensional drawing - GR47

Shaft types & dimensions

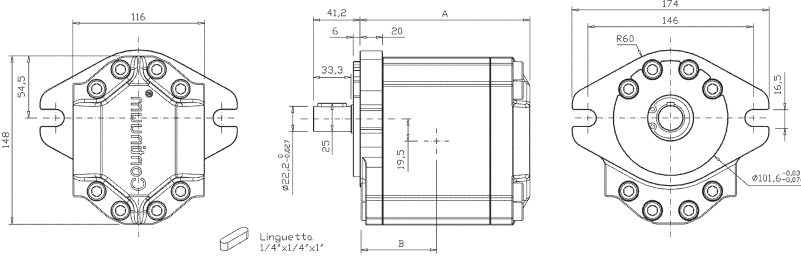


## Disegni dimensionali - GR47

Tipo albero e dimensioni

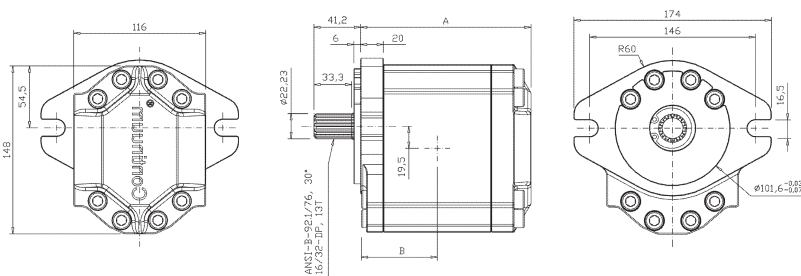
### Type / Tipo 3-C9

| Type<br>Tipo | CC   | L/min | Dim A | Dim B | Cont<br>Press | Interm<br>Press (*) | Peak Press<br>Press. Picco (*) | Noise Level<br>Livello Rumore |
|--------------|------|-------|-------|-------|---------------|---------------------|--------------------------------|-------------------------------|
| 28           | 28   | 40,3  | 150,1 | 67,55 | 270           | 280                 | 300                            | 57                            |
| 32           | 32,2 | 46,3  | 154,1 | 69,55 | 252           | 270                 | 280                            | 57                            |
| 36           | 36,3 | 52,3  | 158,1 | 71,55 | 239           | 250                 | 270                            | 57                            |
| 40           | 40,5 | 58,3  | 162,1 | 73,55 | 225           | 250                 | 270                            | 57                            |
| 45           | 45,1 | 65,0  | 166,6 | 75,8  | 213           | 250                 | 270                            | 57                            |
| 50           | 50,3 | 72,4  | 171,6 | 78,3  | 202           | 250                 | 270                            | 57                            |



### Type / Tipo SAEB-AC

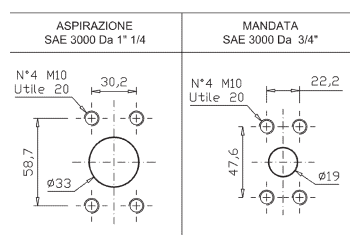
| Type<br>Tipo | CC   | L/min | Dim A | Dim B | Cont<br>Press | Interm<br>Press (*) | Peak Press<br>Press. Picco (*) | Noise Level<br>Livello Rumore |
|--------------|------|-------|-------|-------|---------------|---------------------|--------------------------------|-------------------------------|
| 28           | 28   | 40,3  | 150,1 | 67,55 | 270           | 280                 | 300                            | 57                            |
| 32           | 32,2 | 46,3  | 154,1 | 69,55 | 252           | 270                 | 280                            | 57                            |
| 36           | 36,3 | 52,3  | 158,1 | 71,55 | 239           | 250                 | 270                            | 57                            |
| 40           | 40,5 | 58,3  | 162,1 | 73,55 | 225           | 250                 | 270                            | 57                            |
| 45           | 45,1 | 65,0  | 166,6 | 75,8  | 213           | 250                 | 270                            | 57                            |
| 50           | 50,3 | 72,4  | 171,6 | 78,3  | 202           | 250                 | 270                            | 57                            |



### Type / Tipo SAEB-T11

| Type<br>Tipo | CC   | L/min | Dim A | Dim B | Cont<br>Press | Interm<br>Press (*) | Peak Press<br>Press. Picco (*) | Noise Level<br>Livello Rumore |
|--------------|------|-------|-------|-------|---------------|---------------------|--------------------------------|-------------------------------|
| 28           | 28   | 40,3  | 150,1 | 67,55 | 270           | 280                 | 300                            | 57                            |
| 32           | 32,2 | 46,3  | 154,1 | 69,55 | 252           | 270                 | 280                            | 57                            |
| 36           | 36,3 | 52,3  | 158,1 | 71,55 | 239           | 250                 | 270                            | 57                            |
| 40           | 40,5 | 58,3  | 162,1 | 73,55 | 225           | 250                 | 270                            | 57                            |
| 45           | 45,1 | 65,0  | 166,6 | 75,8  | 213           | 250                 | 270                            | 57                            |
| 50           | 50,3 | 72,4  | 171,6 | 78,3  | 202           | 250                 | 270                            | 57                            |

### TYPE O / TIPO O



### Available ports

Porte disponibili

(\*) Intermittent: cycle 20 sec. ON & 3 sec. OFF - Peak: cycle 1 sec. ON & 3 sec. OFF  
Intermittente: ciclo 20 sec. ON & 3 sec. OFF - Picco: ciclo 1 sec. ON & 3 sec. OFF